



2-385.00 Pembroke Connector

KY 115 - Christian County, Kentucky





2-385.00 Pembroke Connector

KY 115 - Christian County, Kentucky

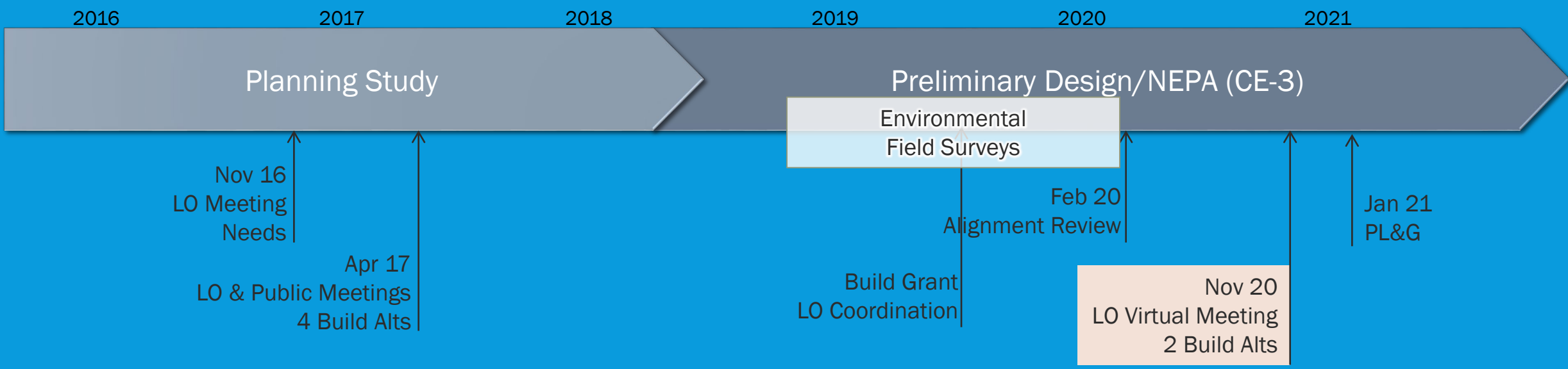
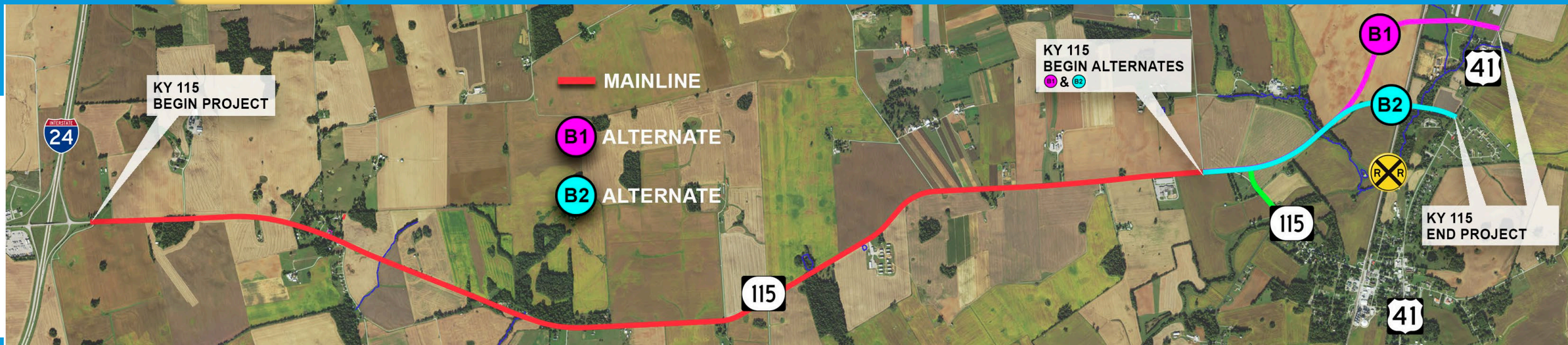
Pembroke Corridor Study
<https://transportation.ky.gov/Planning/Pages/Project-Details.aspx?Project=Pembroke%20Corridor%20Study>

Pembroke Corridor Study
Christian County
Item Number: 2-381.00
March 2018

FINAL



2-385.00 Pembroke Connector





2-385.00 Pembroke Connector

KY 115 - Christian County, Kentucky

Unique Challenges

- Navigating COVID-era restrictions
 - How do we engage with the public remotely and ensure equitable access?
- How do you reach the Amish community during a pandemic “virtually”?

[Press Release](#)

[Facebook](#)

[Local Officials Virtual Meeting](#)

[Project Website](#)

<https://bit.ly/35lpTfK>

Or

<https://storymaps.arcgis.com/stories/bbbd1c516b5c4032a7393c2bc13df44c>





2-385.00 Pembroke Connector

KY 115 - Christian County, Kentucky

USPS Direct Mailer
Variable Message Boards

THE KENTUCKY TRANSPORTATION CABINET HAS AN ACTIVE DESIGN PROJECT IN YOUR AREA.

KY 115 Pembroke Connector   **RETURN BY 12/31/2020**

Christian County, KY KYTC Item #2-385


Welcome
The Kentucky Transportation Cabinet (KYTC) is completing initial plans for improvements to a section of KY 115 in Christian County. During this time of COVID-19, instead of a public meeting with displays we are seeking other ways to share information about the project and to request feedback and comments from concerned citizens that utilize the corridor. We have shared information about the project at this website <https://bit.ly/35lp1IK>. However, this flyer will provide an overview of the project and where we are in the process.

The Project
As the map denotes, this project seeks to improve KY 115 from just north of the I24 interchange to a point south of Pembroke and near Rosedale Cemetery, where the project then breaks away from the existing roadway onto a new alignment. It then spans the railroad track with a new bridge and ties into US 41 on the northwest side of Pembroke at a new intersection. The project will keep the majority of the route as 2 lanes, with an improved lane-width of 11 feet, and inclusion of a 10-foot paved shoulder. Sharp and sight-limiting curves will be improved to current design standards, and a center turn lane at Pembroke Elementary School will be added to assist south bound left turn movements.

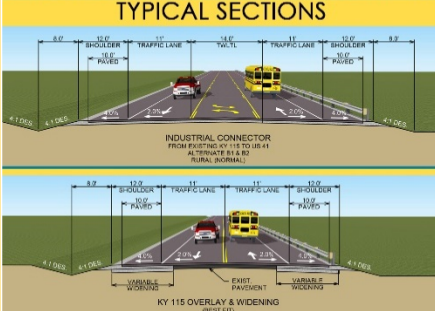
Two routes are being studied for the new alignment around Pembroke and over the Railroad and are labeled as B1 and B2 as shown on the map.

The purpose of this informational flyer and website to gather public information and input about the project. The information we gather, the data we get from environmental consultants, and the engineers' studies will shape the project. For those receiving this flyer, the same questionnaire located on the website is included in this mailout that you are receiving. Please fill out the questionnaire, and add any comments that you would like to make about the project, your property or the two studied alignments around Pembroke and mail back to either of the contacts listed. KYTC appreciates your involvement in the project and we encourage you to fill out the attached survey and/or send in any comments that you may have to either contact listed below. Deadline for receiving all questionnaires and comments is **December 31, 2020**.

Timeline
In summary, the future of the project is dependent on future funding, therefore it is very difficult to predict when the project may be built. What is being completed with the current Kentucky Transportation Cabinet contract is preliminary design. Final Design will be by separate contract, and that is scheduled to begin on the northern half of the project (from Anderson Road north) in 2021. Final design of the south piece of this project (from Anderson Road south) is not currently scheduled. The timing of Right-of-Way acquisition and Utility Relocation, as well as construction is dependent upon future funding and is difficult to predict at this time.




TYPICAL SECTIONS




The project includes two pieces:
— Widening KY 115
— Creating a new route west of Pembroke with a new bridge over the Railroad. Two options are being studied.

FOR ADDITIONAL INFORMATION PLEASE CONTACT:

George Phelps, PE
Kentucky Transportation Cabinet
District #2 Office
1840 N. Main St.
Madisonville, KY 42431
270-824-7080
GeorgeB.Phelps@ky.gov



Kevin McClearn, PE
American Engineers, Inc.
308 E. 25th St.
Owensboro, KY 42303
270-478-4610
kmcclern@aei.cc



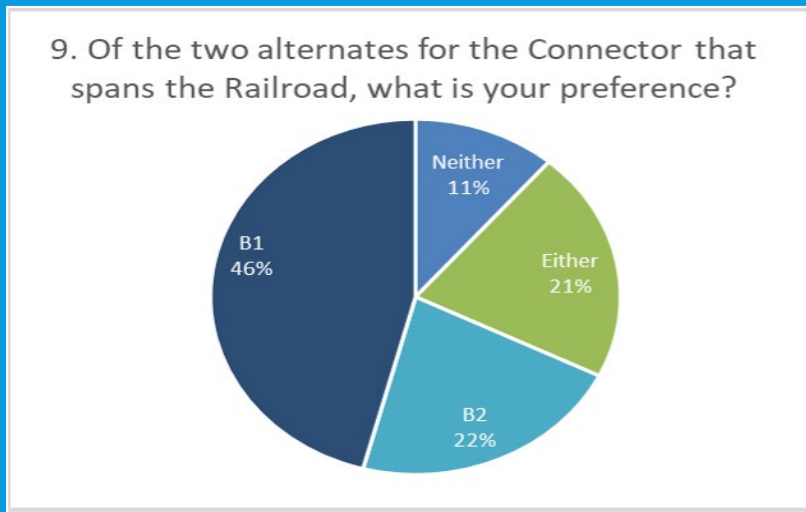
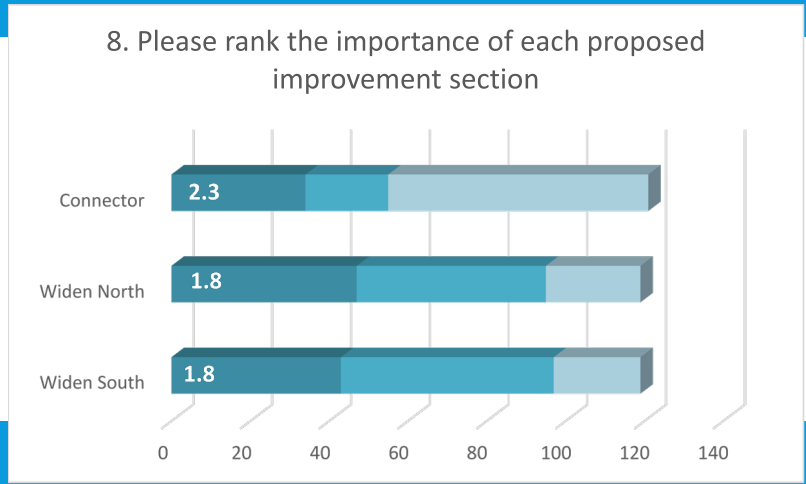


2-385.00 Pembroke Connector

KY 115 - Christian County, Kentucky

Results of the Outreach

- November 2, 2020 virtual meeting for LO/Stakeholders via MS Teams
- November 2020 announcement of website and survey: Press Release, Facebook, Postcard, LO efforts to promote
- Mailed packets with informational flyers to Amish community, others upon request
- 145 completed surveys (online and paper versions)





2-385.00 Pembroke Connector

KY 115 - Christian County, Kentucky

Tentative Project Schedule

- Advanced Right-of-Way Plans October, 2021
- Joint Inspection Meeting November, 2021
- Final Plans March, 2023



2-385.00 Pembroke Connector

KY 115 - Christian County, Kentucky

Questions